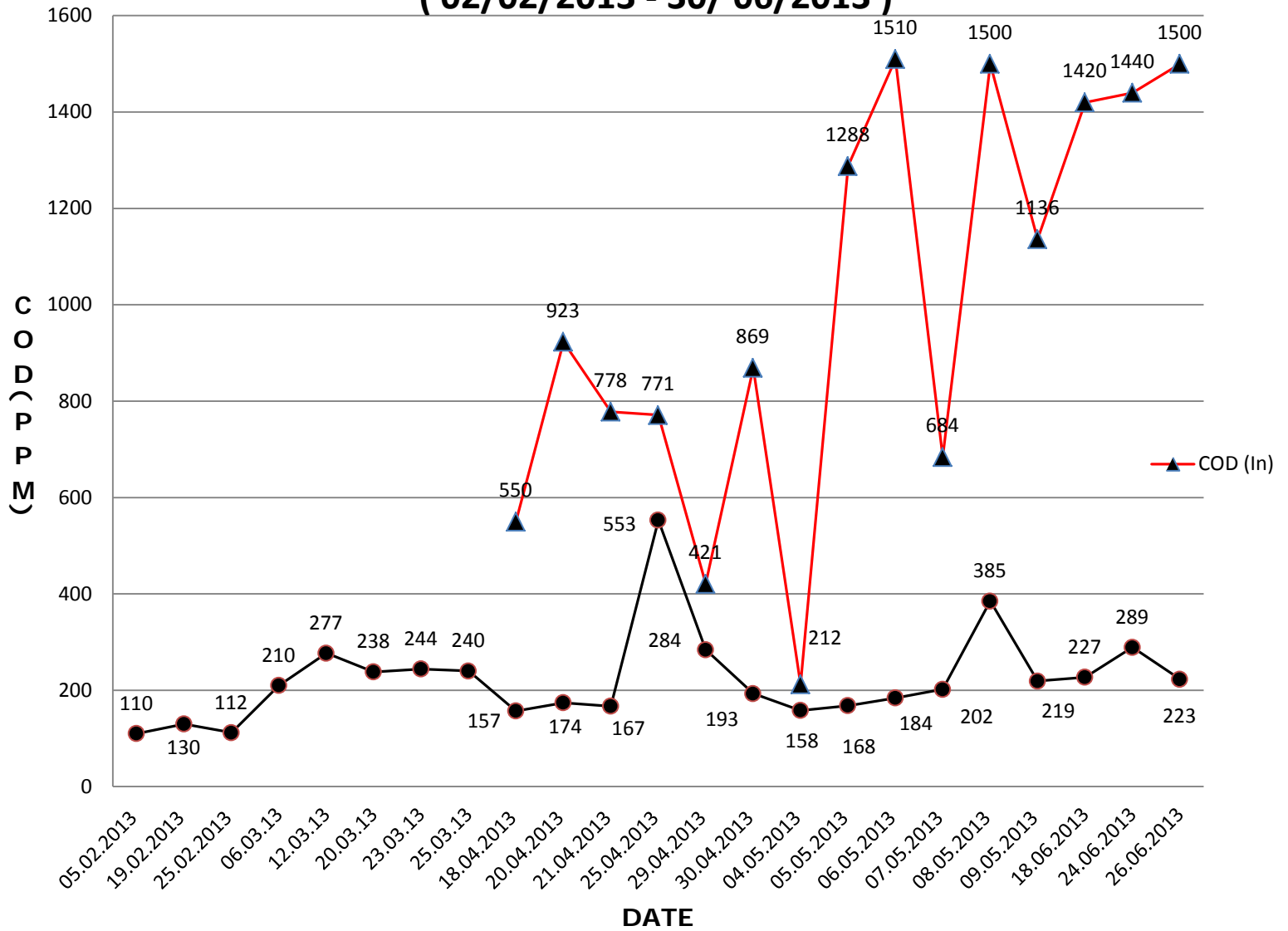
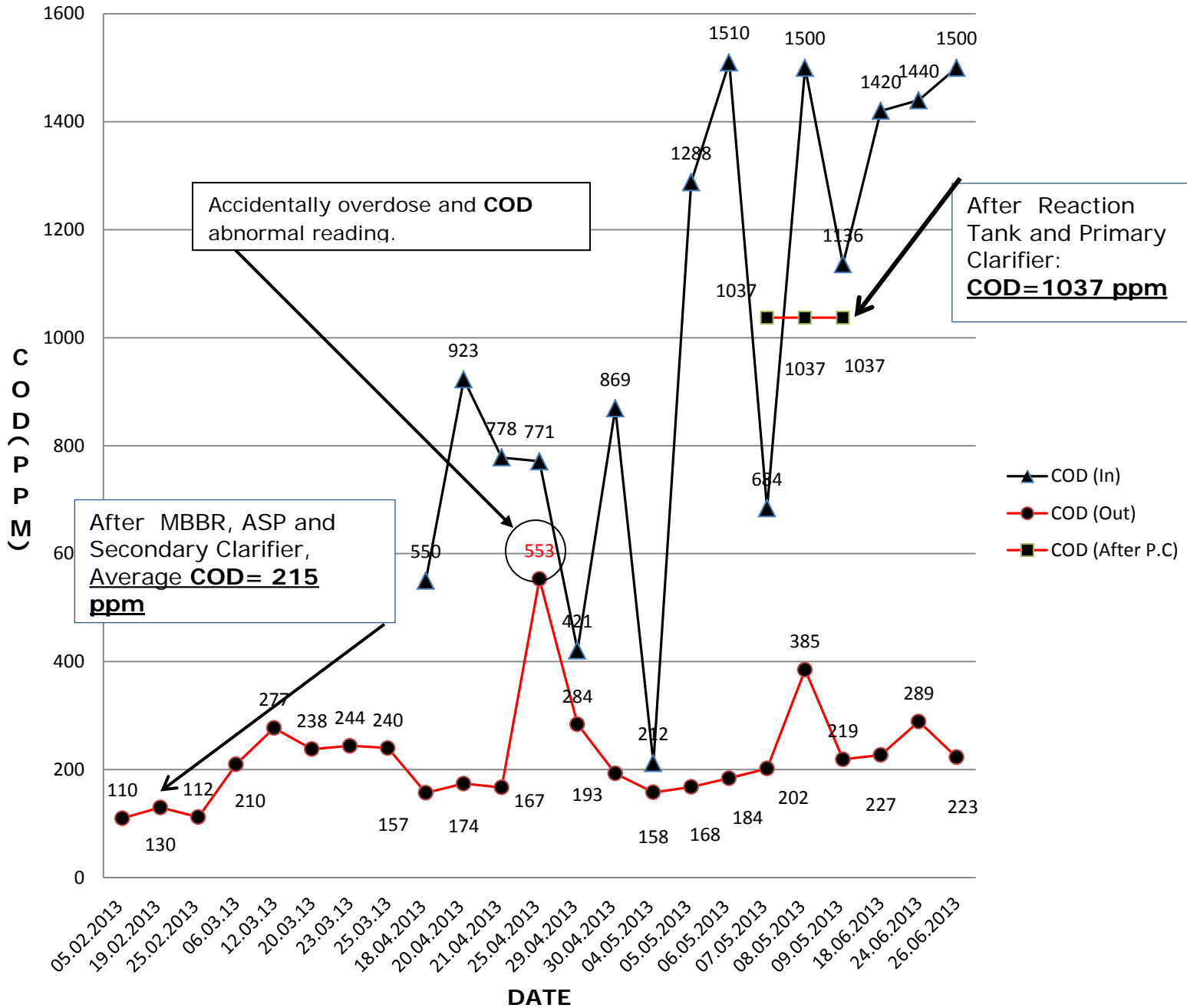


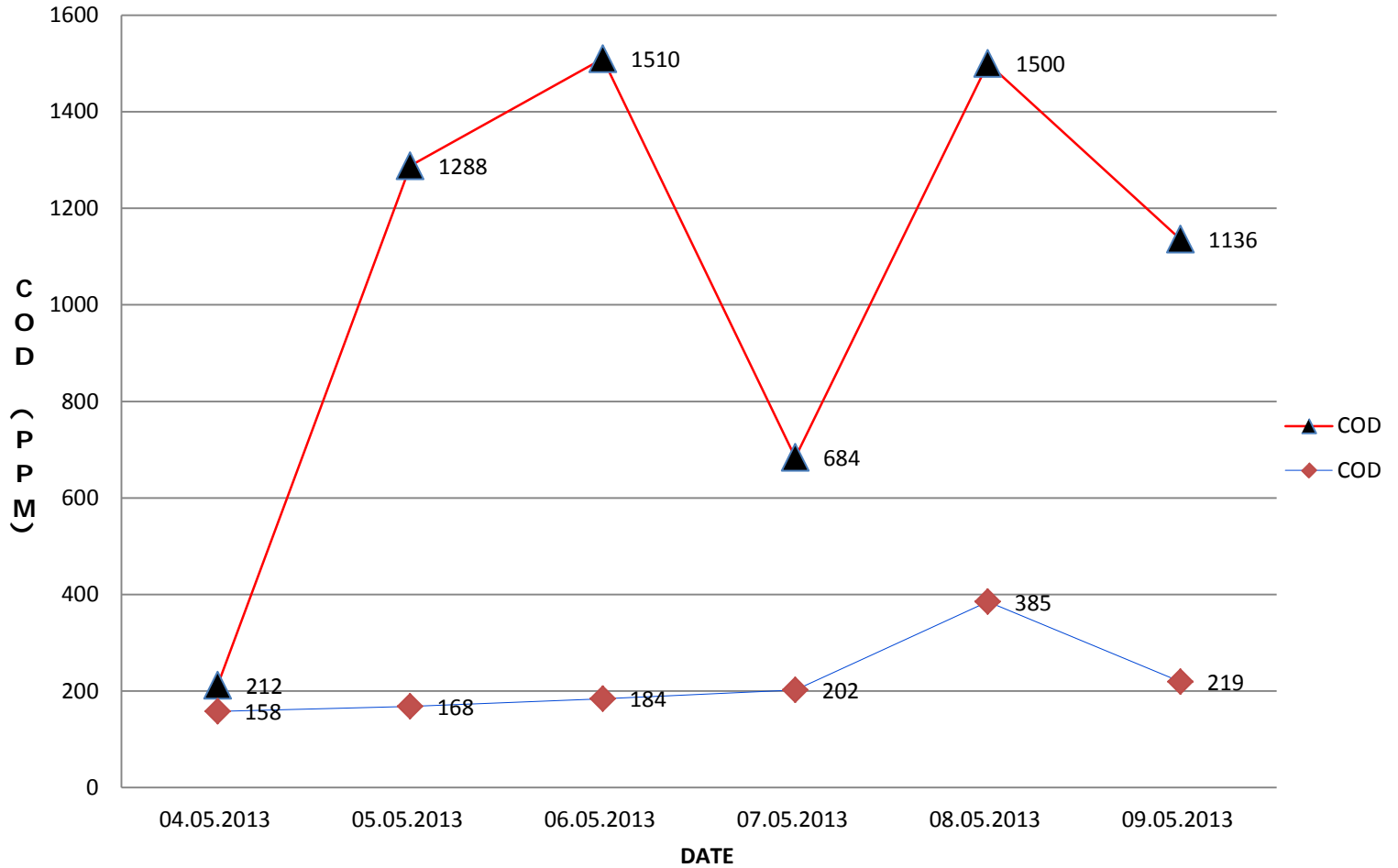
Influent and effluent COD Result for Crown Mill (BD) Ltd. (02/02/2013 - 30/ 06/2013)



Influent and effluent COD Results for Crown mill (BD) Ltd. (02/02/2013 - 30/06/2013)



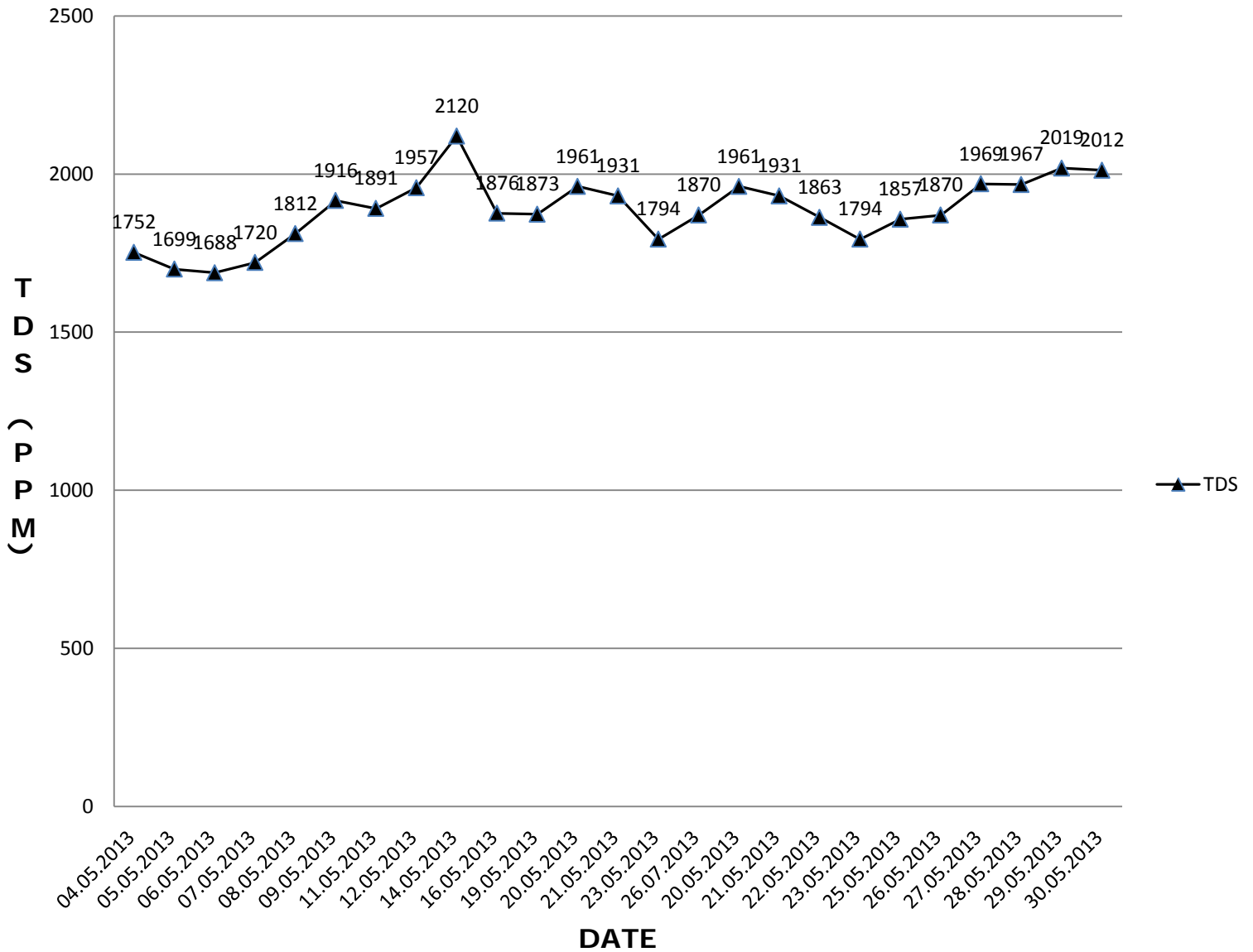
Influent and effluent COD Results for crown mill (BD) ltd (01/05/2013 - 10/05/2013)



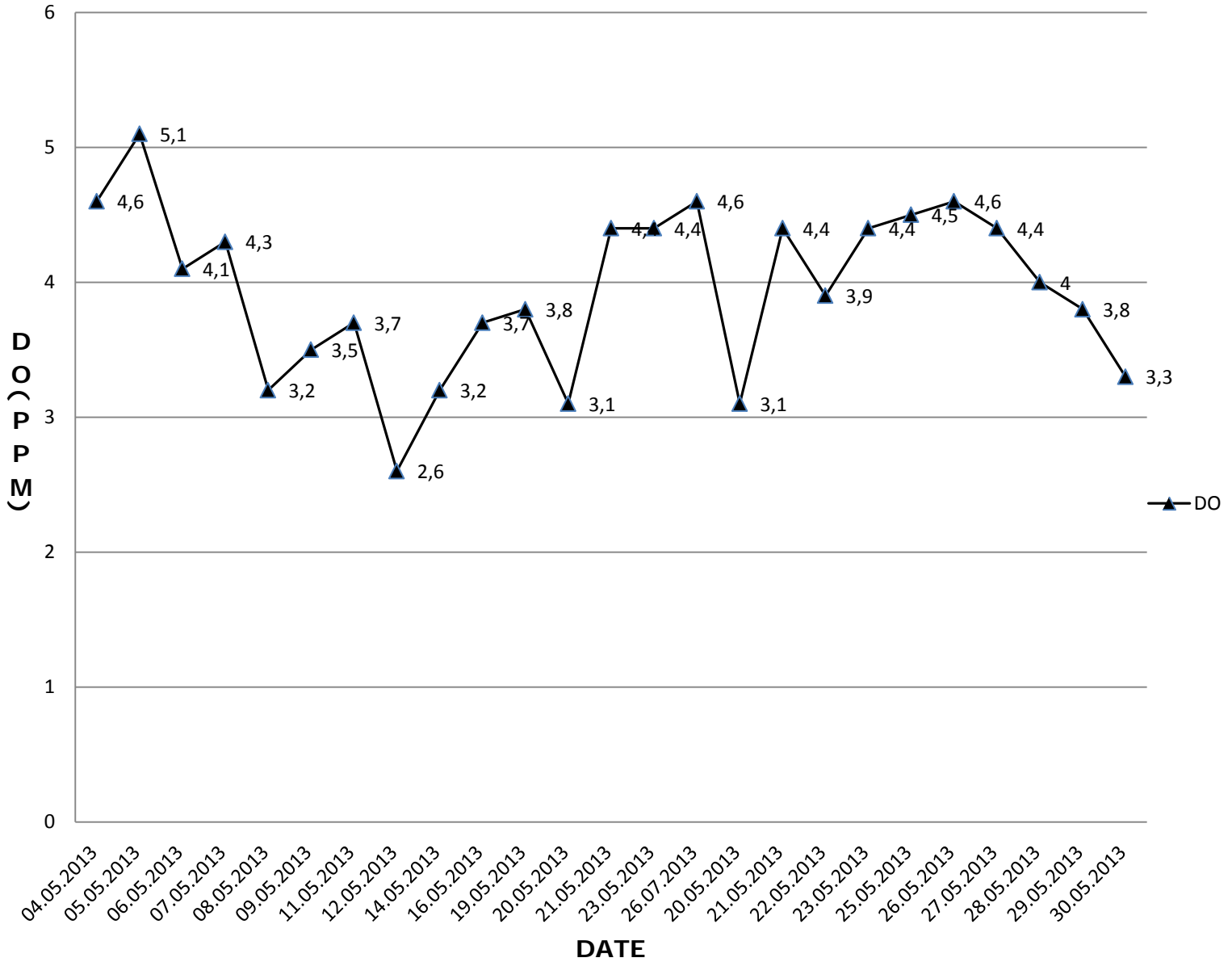
Triangle Point (Collection Sump)

Star Point (Final Discharge)

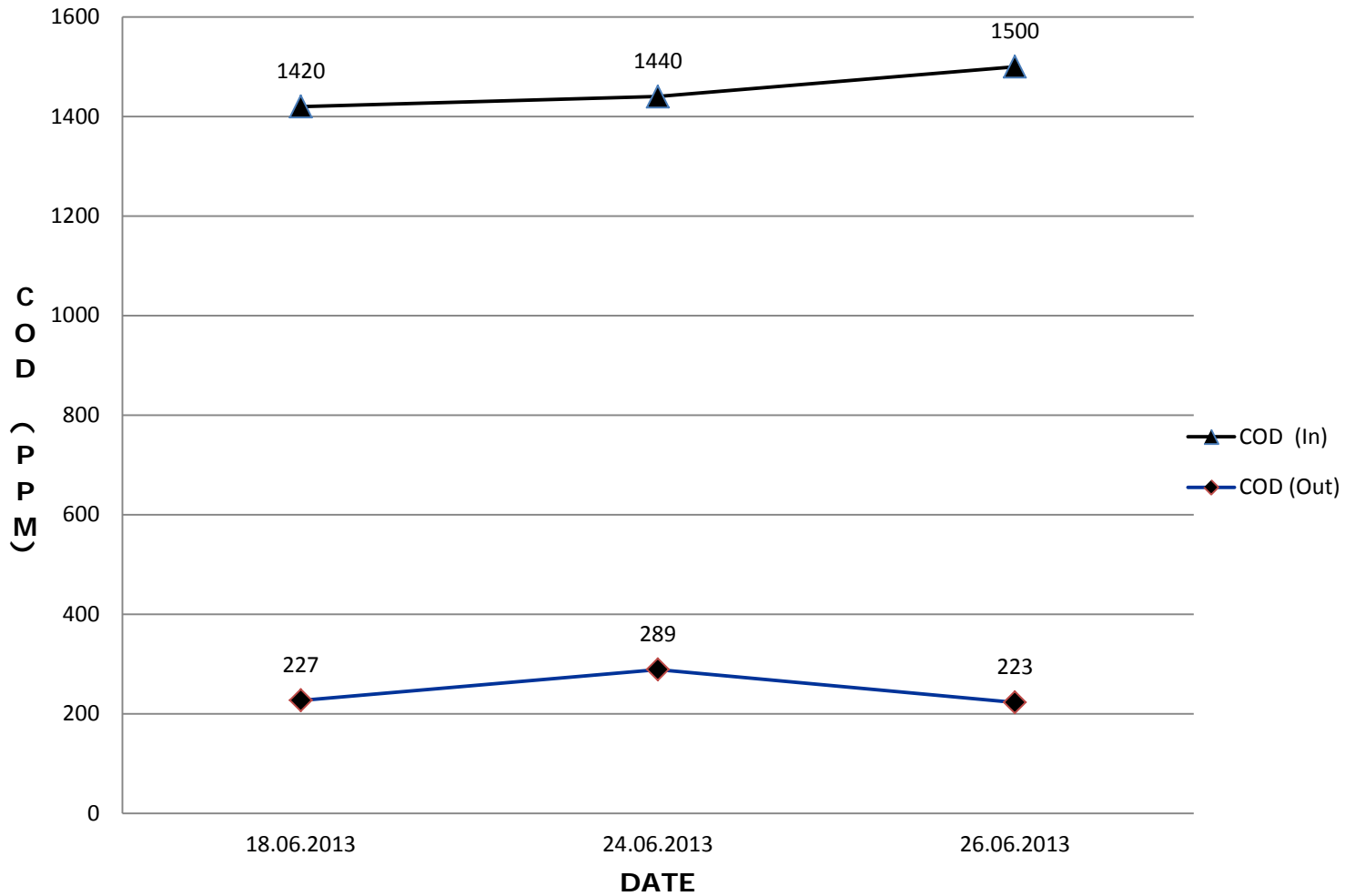
Influent and effluent TDS Results for crown mill (BD) Ltd. (01/05/2013 - 30/05/2013)



Influent and effluent DO Results for Crown Mill (BD) Ltd. (01/05/2013- 30/052013)



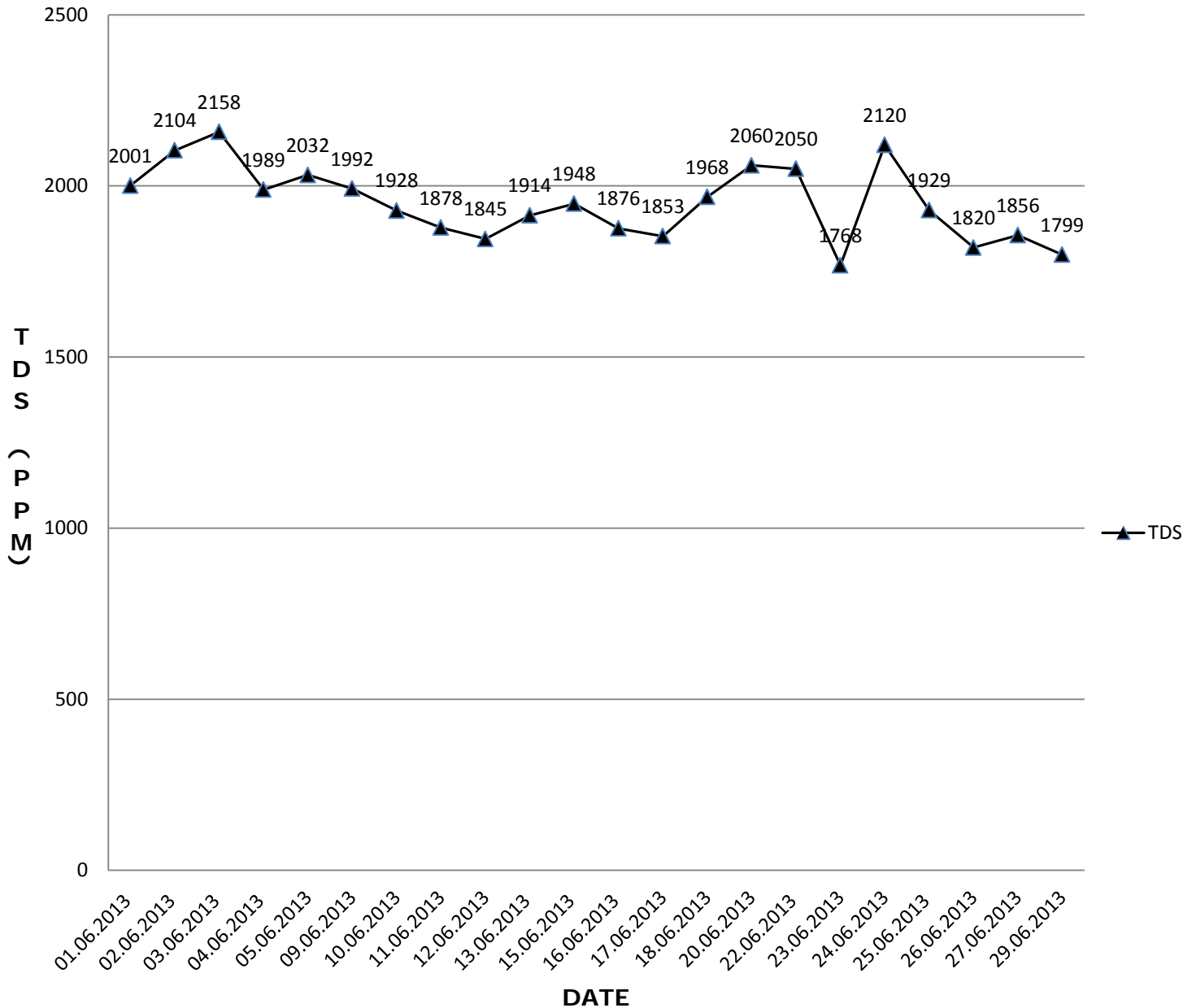
Influent and effluent COD of Crown Mill (BD) Ltd. (01/06/2013- 30/06/2013)



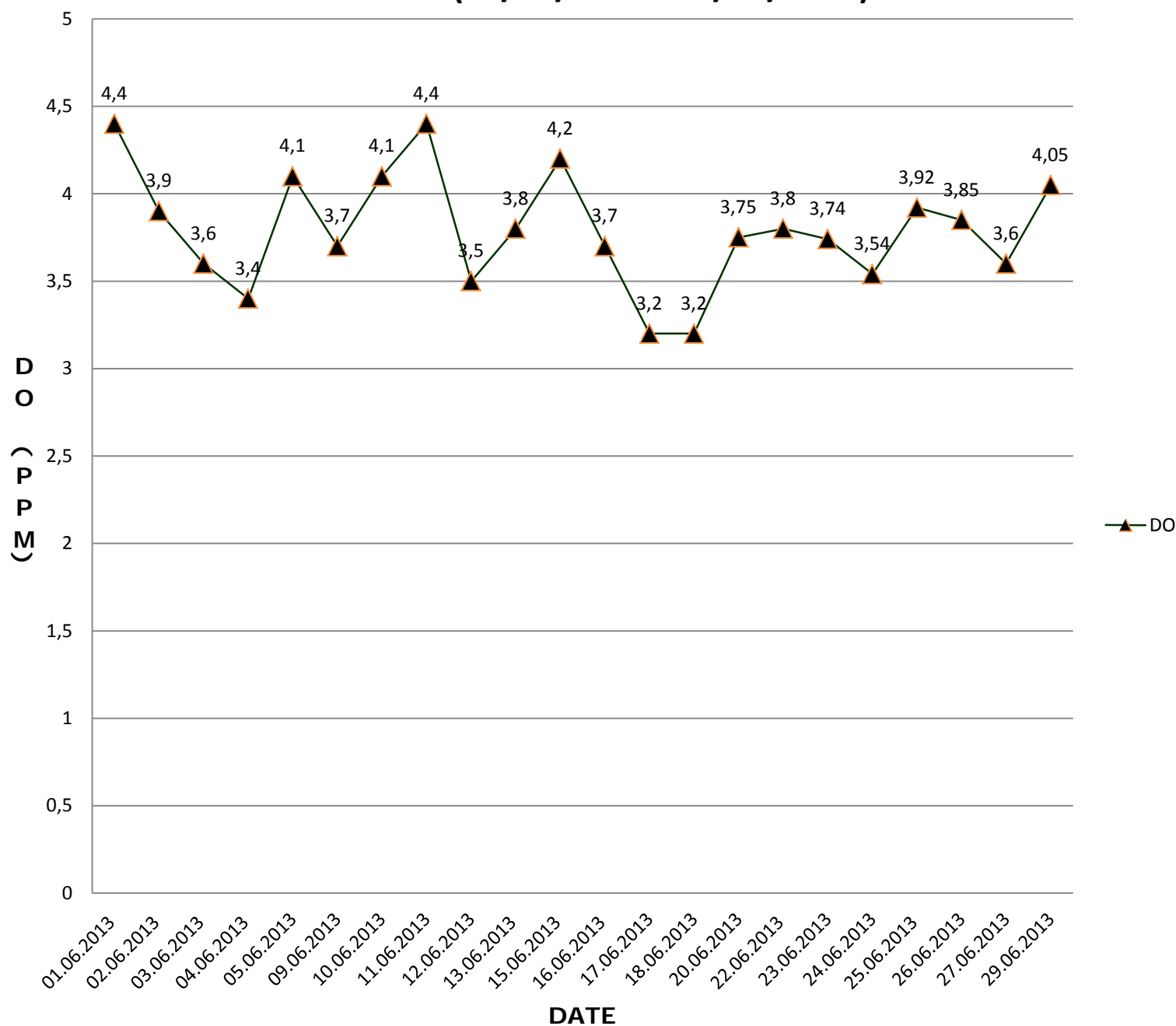
Triangle Point (Collection Sump)

Star Point (Final Discharge)

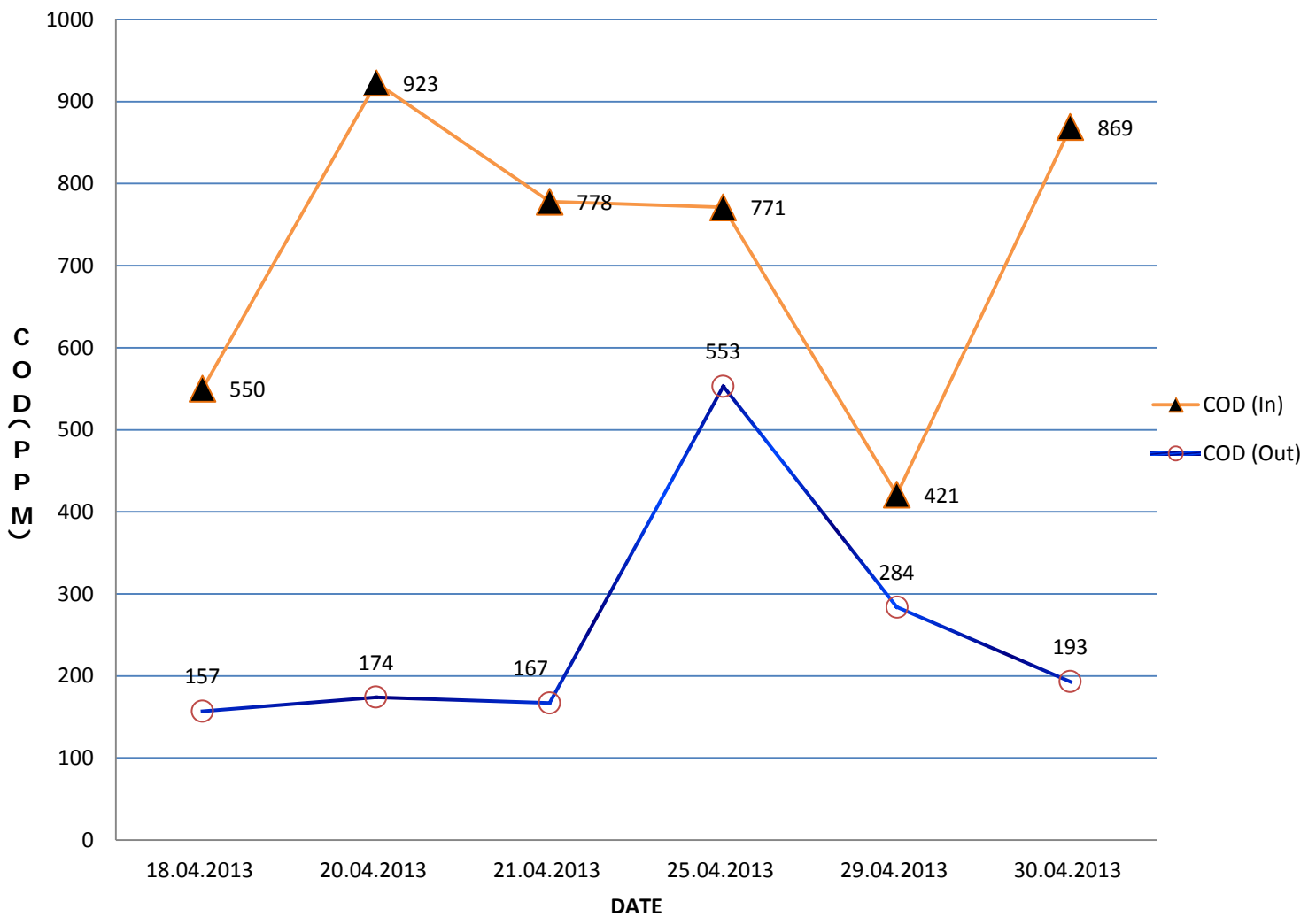
Influent and effluent TDS Results for Crown mill (BD) ltd (01.06.2013 - 30.06.2013)



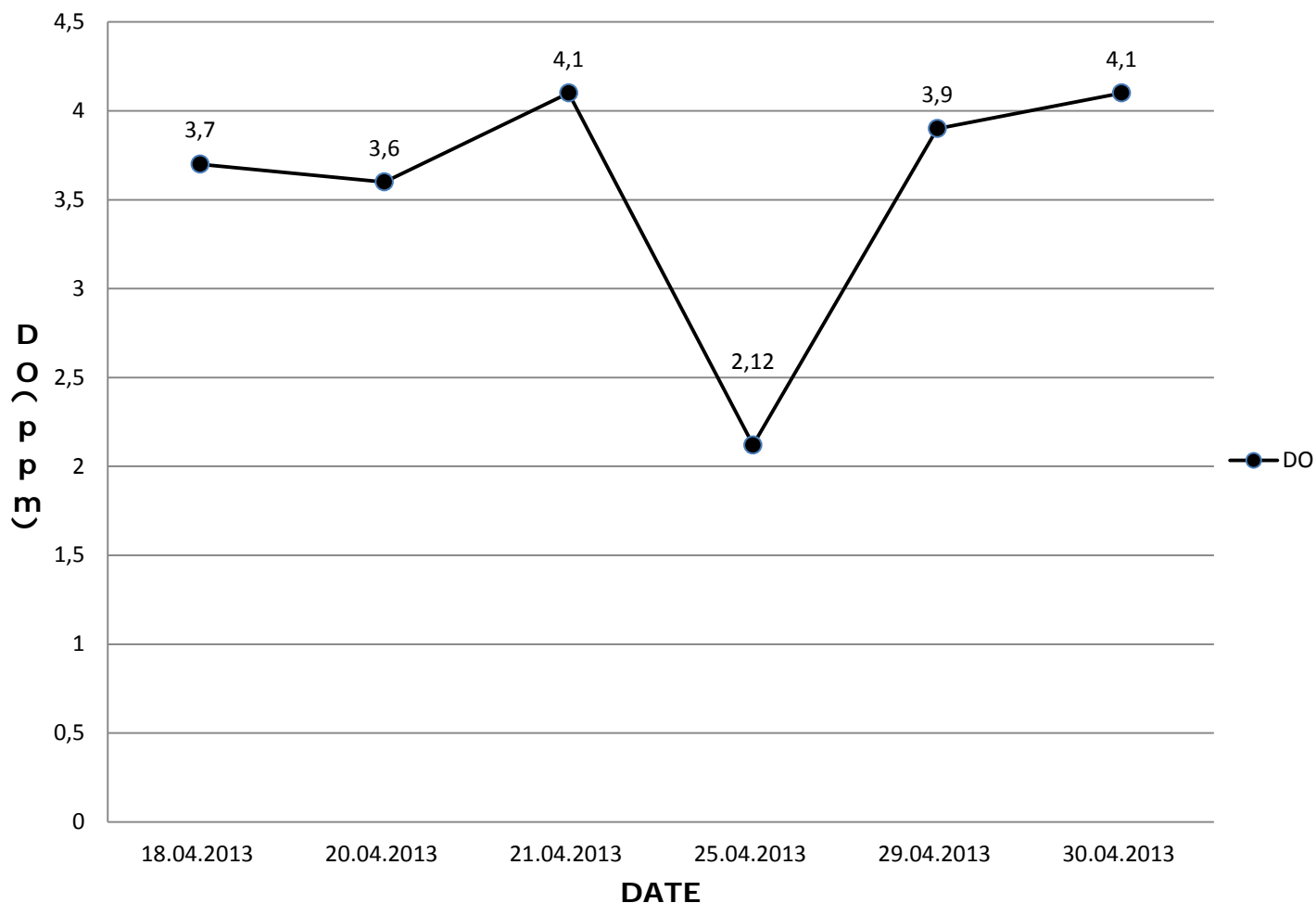
Influent and effluent DO Result for Crown mill bd Ltd (01/06/2013 - 30/06/2013)



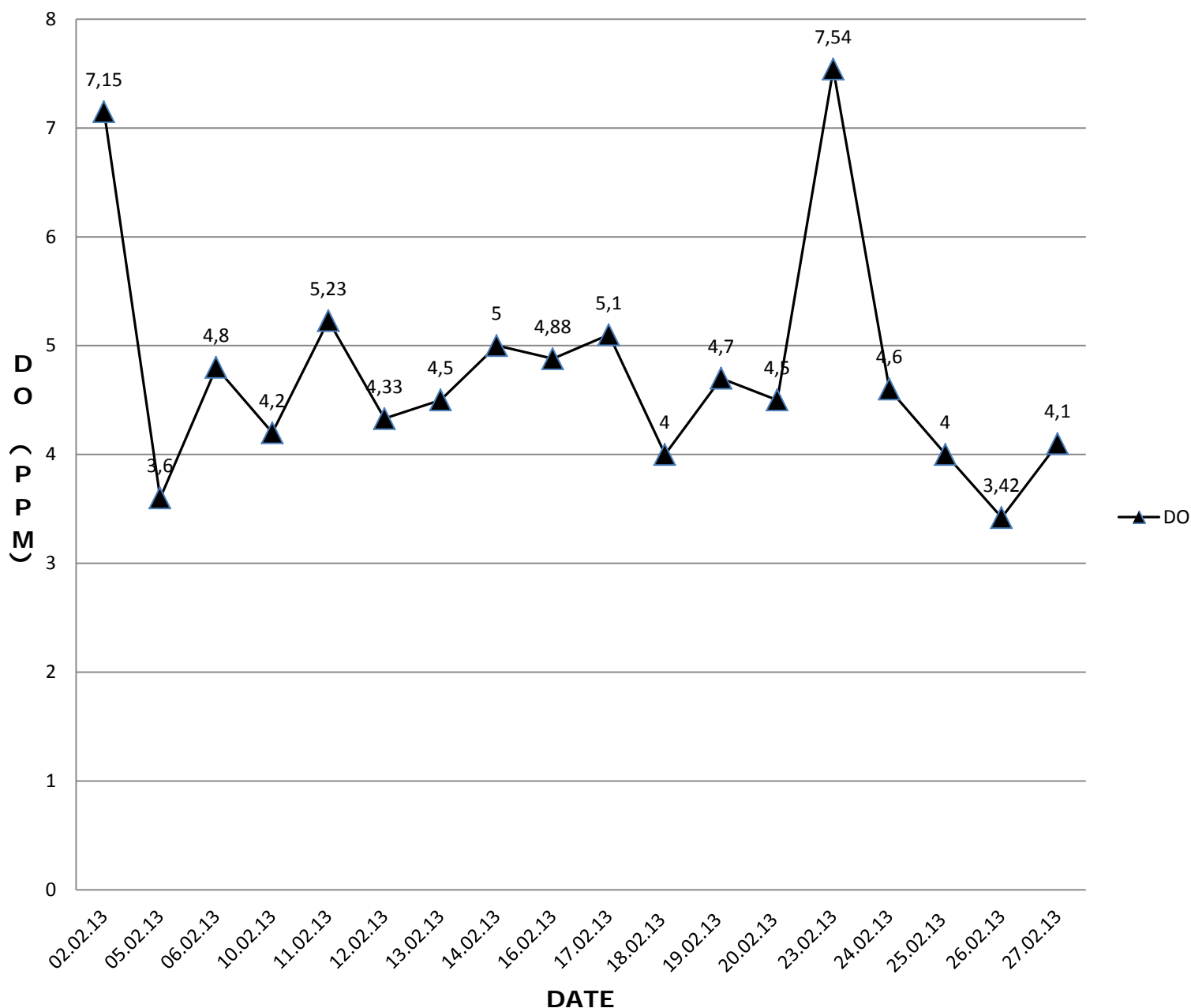
Influent & effluent COD Results for Crown Mill (BD) ltd. (17/04/2013 - 30/04/2013)



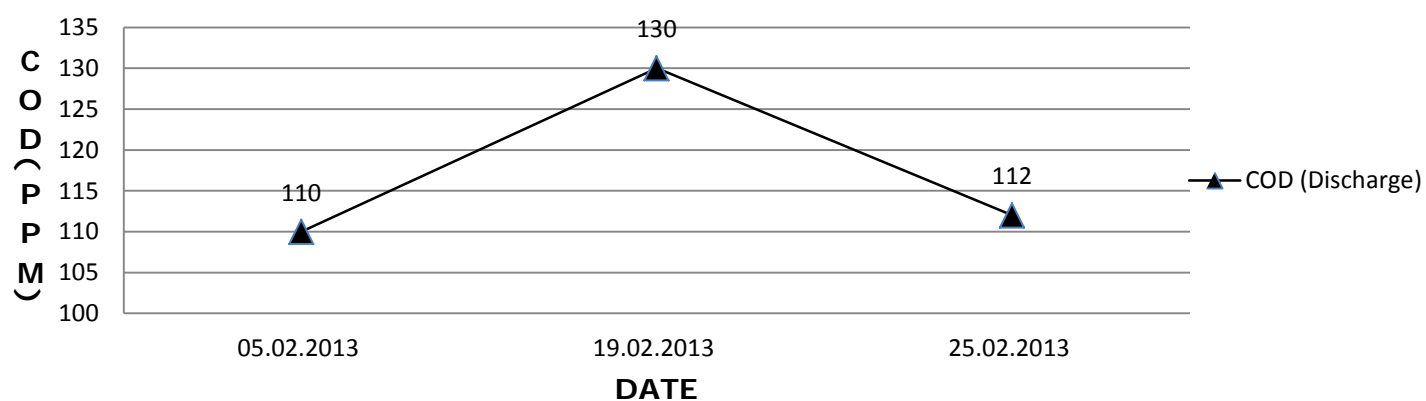
Influent and effluent DO Results for Crown mill (BD) Ltd (15/04/2013 - 30.04.2013)



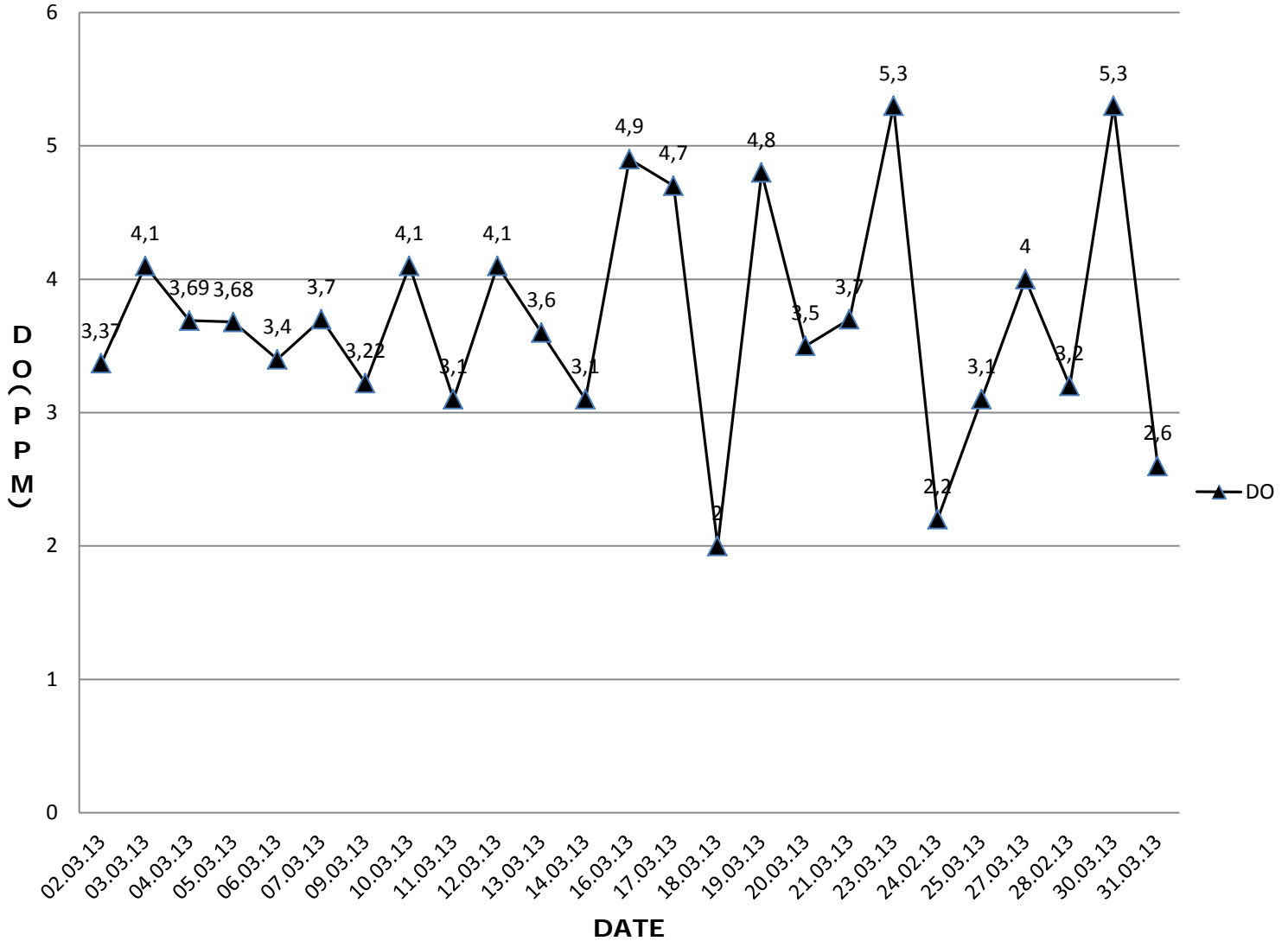
Influent and effluent DO Results for Crown mill (BD) Ltd. (01/02/2013 - 27/02/2013)



Effluent COD Results for Crown Mill (BD) Ltd. (01/02/2013 - 28/02/2013)



Discharge effluent DO Results for Crown Mill (BD) Ltd. (01/03/2013 - 31/03/2013)



Discharge Effluent COD Results for Crown Mill (BD) Ltd. (01/03/2013 - 31/03/2013)

